



**SOLICO
METAL**

COMPANY PROFILE

2025

About us

Solico Metal was founded post-pandemic to address severe supply chain disruptions that left clients waiting months for steel orders. Starting in a 12,000 Sq ft. facility in Kathryn, AB, with a small, dedicated team, the company has since expanded to a 47,000 sq ft facility in Inglewood, employing over 50 talented staff members.

Since 2020, we've grown from fabricating 18,000 sq. ft. of mezzanine space in Kathryn, AB, to processing 1.5 million lbs. of steel. In 2022, we upgraded to automated machinery, increasing capacity to 2.5 million lbs. By 2023, we fabricated our first CRU building, and in 2024, we moved to a 43,000 sq. ft. facility, added two automated laser cutters, and expanded to 50+ team members.



**DEDICATED TEAM OF
PROFESSIONALS**



**DESIGN TEAM TO
MATCH YOUR EXACT
EXPECTATIONS**

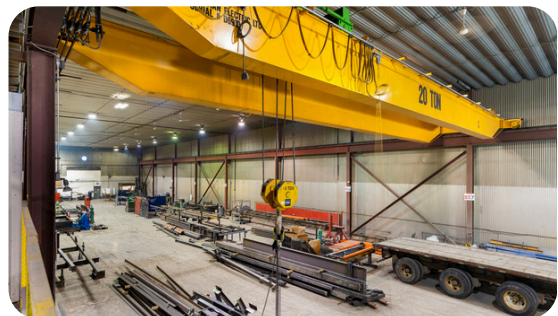
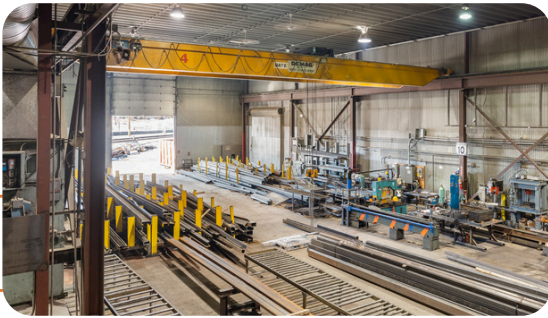


**IN-HOUSE CREWS FOR
SPEED AND CONTROL**



Fact Sheet

- 43,000 Sq ft. fabrication shop
- 10,000 Sq ft. sandblasting and painting shop
- 50+ staff members
- Laser Tube cutter: pipe, beam, C-Channel, angle of 40'x14"x14"
- Laser sheet cutter: maximum 8'x20' x 2 1/4" thickness
- 3 cranes of 10-, 15- and 25-tons
- Rotational jig
- Punching machine
- 14 welding stations
- 2 large cutting saws
- Ironworker machine
- 10 medium projects a month
- 600,000-800,000 Lbs. of steel capacity per month



What we do

Solico Metal specializes in custom steel manufacturing and fabrication, offering solutions like racking systems, mezzanines, and condo storage lockers. Based in Calgary, we supply Western Canada with made-to-order products, installation services, and after-sales support. With a focus on quality, on-time delivery, and engineering approvals, we are your trusted partner for all steel-related needs.



**STRUCTURAL
STEEL**



**STRUCTURAL
PALLET RACKING**



**RACK SUPPORTED
BUILDING (AS/RS)**



**CANTILEVER
RACKING**



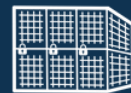
**MISCELLANEOUS
STEEL**



MEZZANINE



CUSTOM PARTS



**CONDO STORAGE
LOCKERS**



Leadership



**Esmail
Soleymani**

Founder & President



**Harish
Consul**

Strategic Board Advisor



**Sohrab
Semnani**

Advisor



**Bill
Purvis**

Business Development



**Ahad
Firouzifar**

Estimating Manager



**Abbas
Amiri**

Operation Excellence



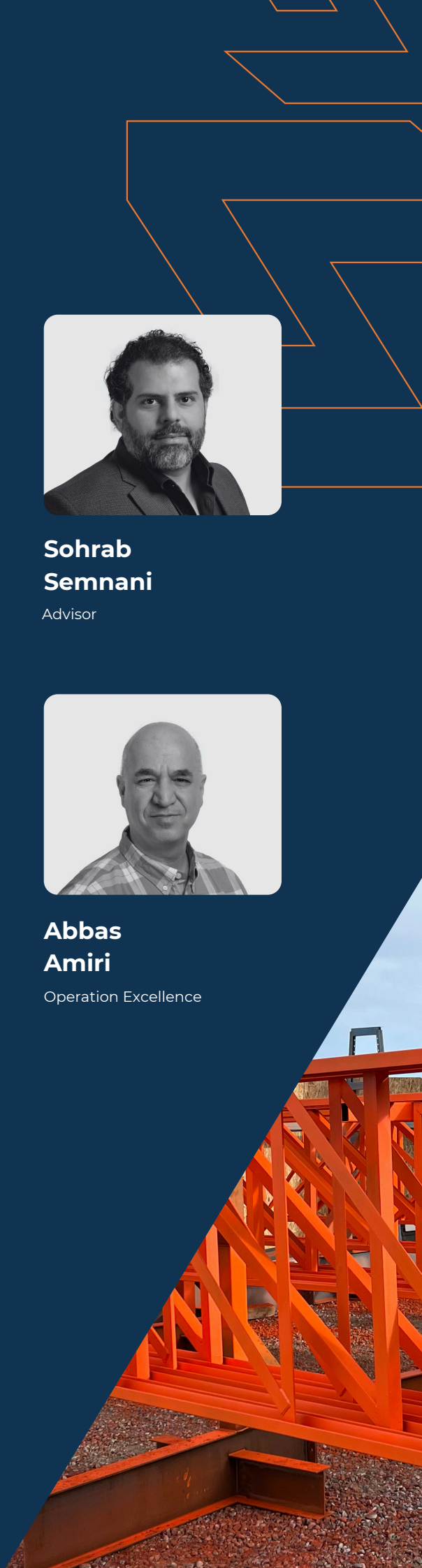
**Niki
Nikbakhsh**

Safety Officer



**Nadiya
Tretyakov**

Account Manager



Strategic Partnership with



In Feb 2025, Solico Metal proudly announced its partnership with **Ocgrow** as a Strategic Growth Advisor.

Since then, with a strong background in business development, **Ocgrow** has played a key role in supporting our long-term growth and expansion plans.

This partnership is strengthening our focus on operational excellence, geographic expansion, and strategic investments that align with our core capabilities in steel fabrication and construction.

Ocgrow is supporting us in:

- Growth Strategy: Advising on scalable business models and market entry opportunities.
- Operational Efficiency: Helping streamline processes and improve performance across projects.
- New Markets: Identifying and guiding expansion into high-potential regions.
- Strategic Partnerships: Connecting Solico with key industry stakeholders and investors.

Solico is positioned for tremendous growth, and it's my privilege to join forces with *Esmail Soleymani*, an exceptional entrepreneur and leader, to accelerate this journey with his outstanding team.

Harish Consul,
Founder & CEO,
Ocgrow Ventures



Notable Projects

Solico Metal is proud to partner with **Ocgrow Ventures** on **Ocgrow's Greystone Place Project** in **Cochrane**. Solico designed, manufactured, and supplied the structural steel for the first of eight planned buildings—our steel framework is already in place. It's exciting to see the momentum building as we help bring this vibrant retail and lifestyle hub to life.

The flagship 35,000 sq. ft. two-storey building marks the beginning of what will be over 300,000 sq. ft. of commercial space. With strong tenant demand and a prime waterfront location, Greystone Place is set to become a cornerstone of Cochrane's growth—and we're proud to help build it from the ground up and see how the community is flourishing in Cochrane.

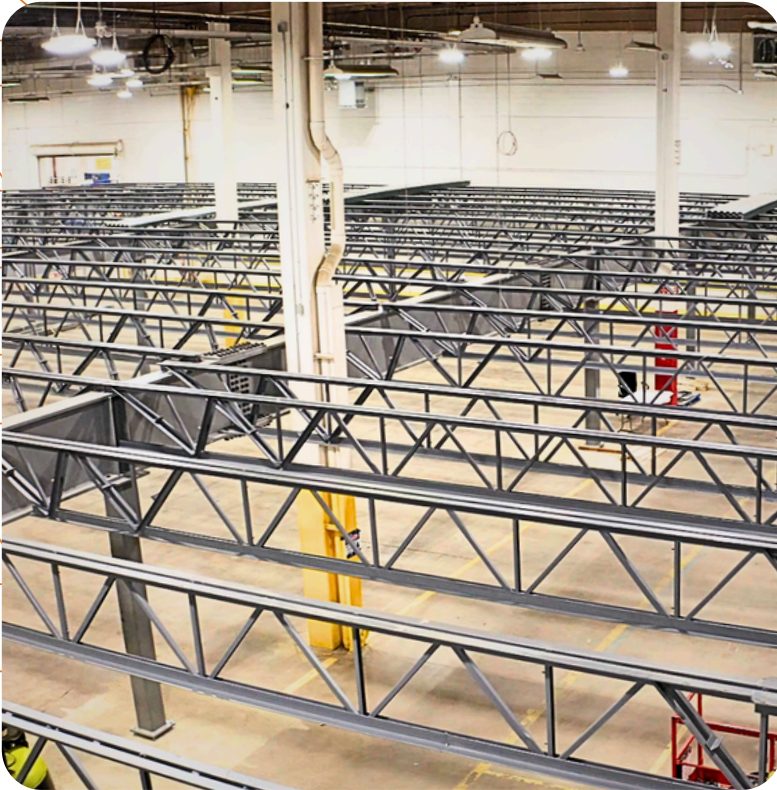




Project Type: CRU (Commercial Retail Unit)
Client: Incognito Development
Location: Okotoks, AB
Completion Date: November 2024



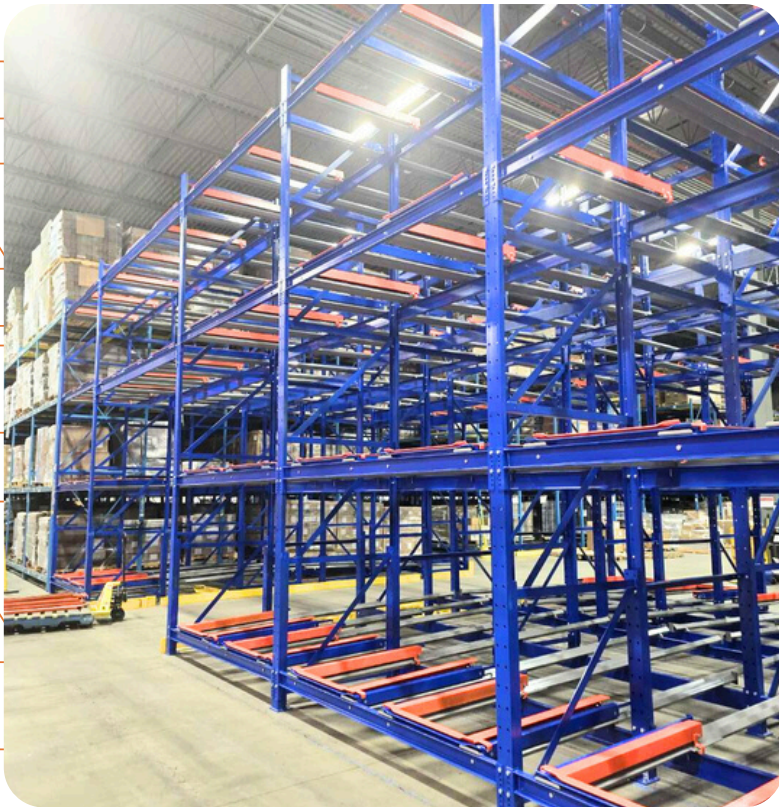
Project Type: Structural Steel to
Support a Basement
Location: Langley, BC
Completion Date: 2023



Project Type: Mezzanine
18,000 Sq ft.
Location: Calgary SE
Completion Date: July 2020

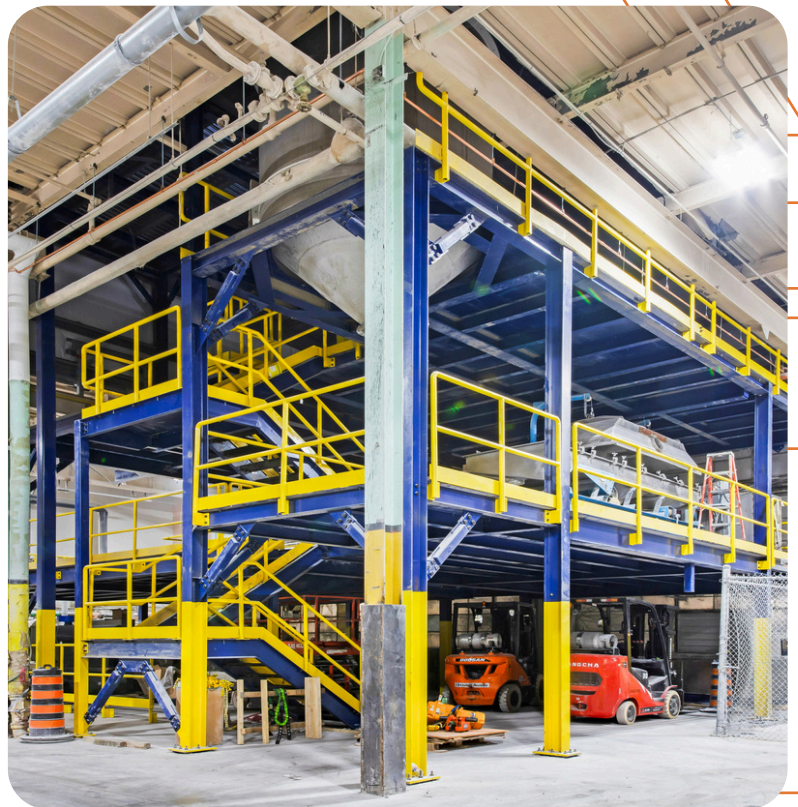


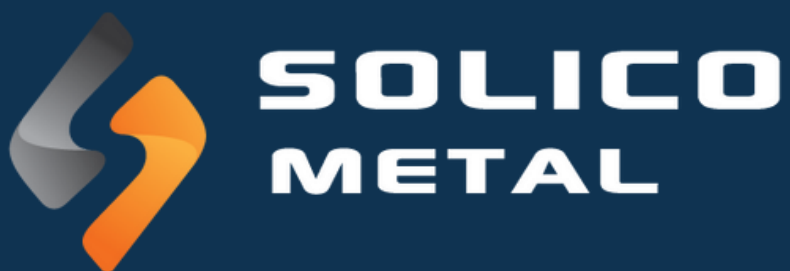
Project Type: Cantilever
160 Bays of Cantilever
Location: Spruce Grove, AB
Completion Date: May 2024



Project Type: Pushback Racking
20.000 lbs. of Steel / 276 pallet
positions
Location: Calgary, AB
Completion Date: January 2025

Project Type: Structural Steel
Platform
4,000 sq. ft. / 150,000 lbs. of Steel
Location: Brantford, ON
Completion Date: December 2024





1401 17 Avenue SE
Calgary, AB
T2G 1J9
solicometal.com
587.349.9676
info@solicometal.com
LinkedIn: [solico-metal](https://www.linkedin.com/company/solico-metal)