



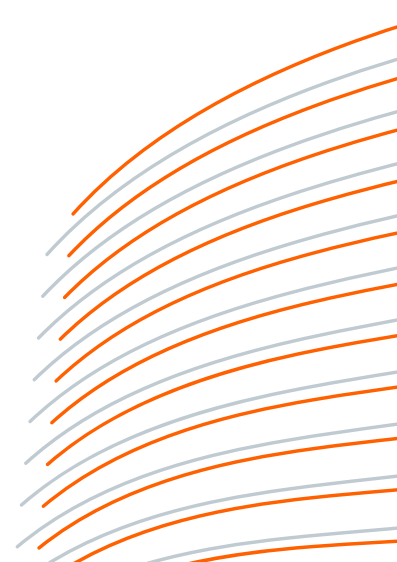
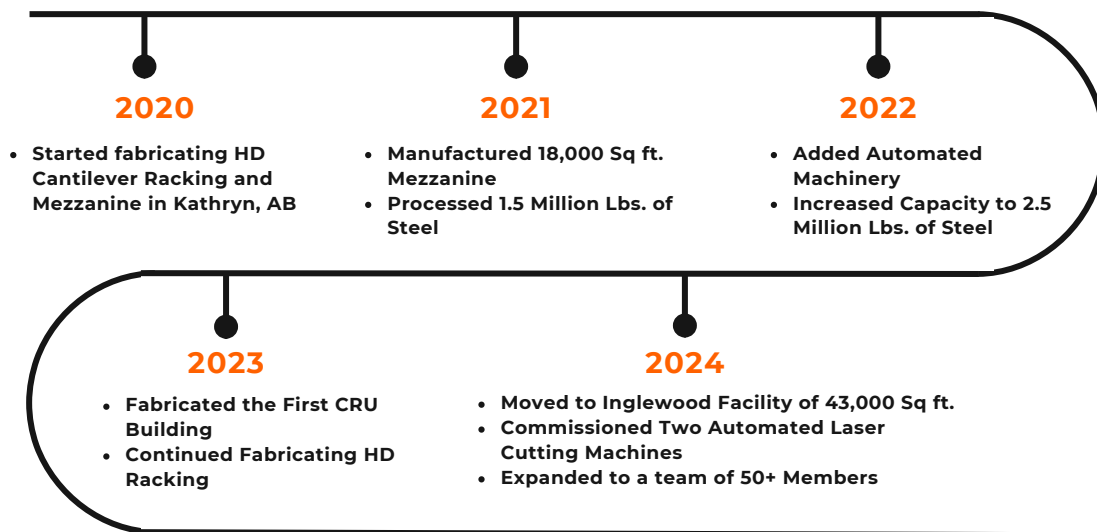
**SOLICO
METAL**

COMPANY PROFILE

2025

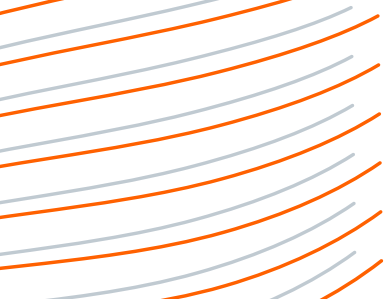
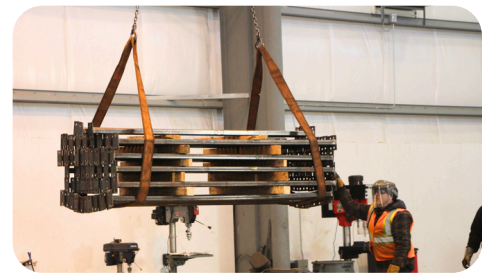
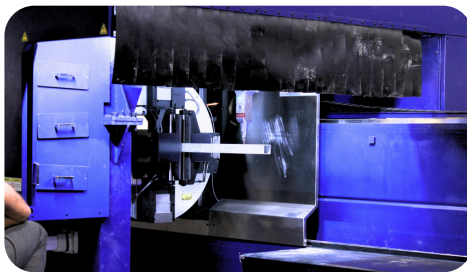
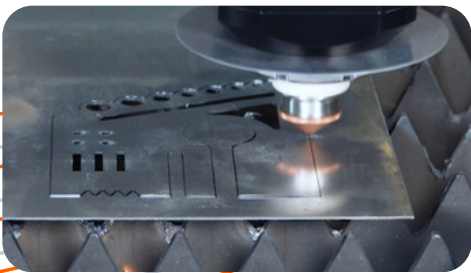
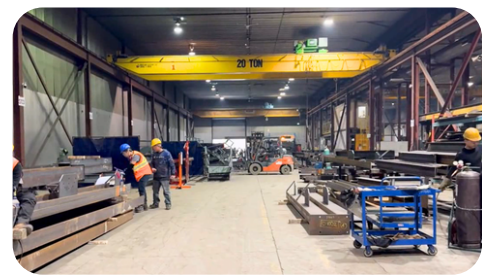
About us

Solico Metal was founded post-pandemic to address severe supply chain disruptions that left clients waiting months for steel orders. Starting in a 12,000 Sq ft. facility in Kathryn, AB, with a small, dedicated team, the company has since expanded to a 47,000 sq ft facility in Inglewood, employing over 50 talented staff members.



Fact Sheet

- 43,000 Sq ft. fabrication shop
- 10,000 Sq ft. sandblasting and painting shop
- 50+ staff members
- Laser Tube cutter: pipe, beam, C-Channel, angle of 40'x14"x14"
- Laser sheet cutter: maximum 8'x20' x 2 1/4" thickness
- 3 cranes of 10-, 15- and 25-tons
- Rotational jig
- Punching machine
- 14 welding stations
- 2 large cutting saws
- Ironworker machine
- 10 medium projects a month
- 600,000-800,000 Lbs. of steel capacity per month



What we do

Solico Metal specializes in custom steel manufacturing and fabrication, offering solutions like racking systems, mezzanines, and condo storage lockers. Based in Calgary, we supply Western Canada with made-to-order products, installation services, and after-sales support. With a focus on quality, on-time delivery, and engineering approvals, we are your trusted partner for all steel-related needs.



**STRUCTURAL
STEEL**



**STRUCTURAL
PALLET
RACKING**



**MISCELLANEOUS
STEEL**



**CUSTOM
PARTS**



**RACK SUPPORTED
BUILDING (AS/RS)**



MEZZANINE



**CANTILEVER
RACKING**



**CONDO
STORAGE
LOCKERS**



Management



**Esmail
Soleymani**

Founder & President



**Ahad
Firouzifar**

Estimation Manager



**Abbas
Amiri**

Manufacturing Manager



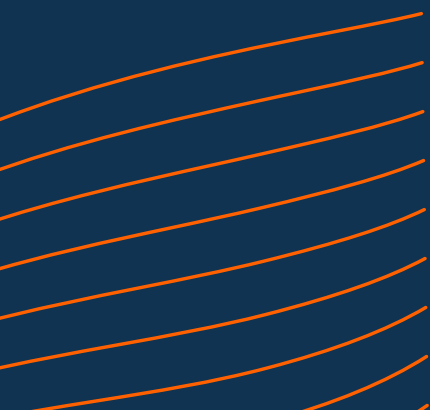
**Bill
Purvis**

Business Development



**Niki
Nikbakhsh**

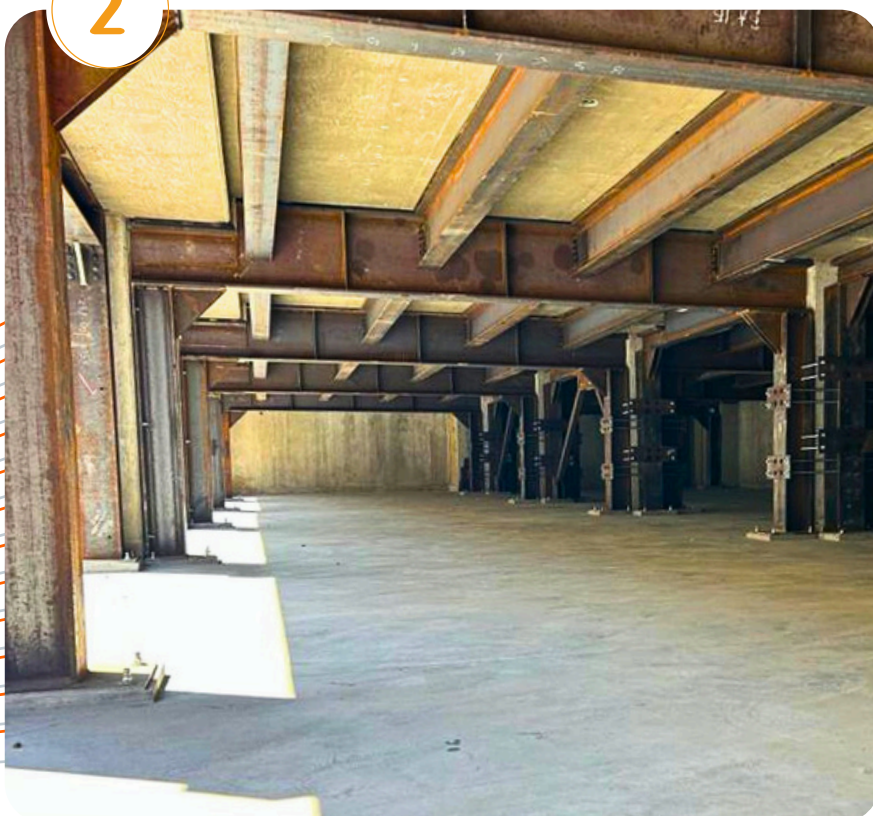
Safety Supervisor



Notable Projects



Project Type: CRU (Commercial Retail Unit)
Client: Incognito Development
Location: Okotoks, AB
Completion Date: November 2024



Project Type: Structural Steel to Support a Basement
Location: Langley, BC
Completion Date: 2023

3

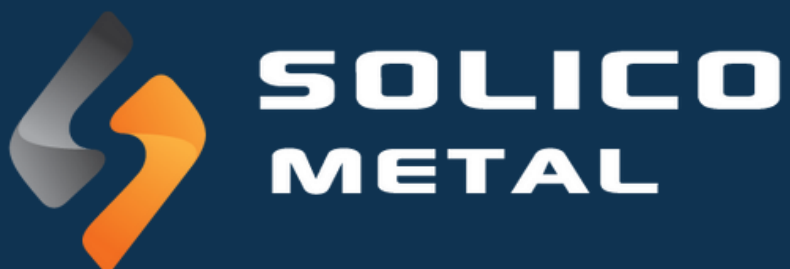


Project Type: Mezzanine
18,000 Sq ft.
Location: Calgary SE
Completion Date: July 2020

Project Type: Cantilever
160 Bays of Cantilever
Location: Spruce Grove, AB
Completion Date: May 2024



4



1401 17 Avenue SE

Calgary, AB

T2G 1J9

solicometal.com

587.349.9676

info@solicometal.com

LinkedIn: [solico-metal](https://www.linkedin.com/company/solico-metal)